



SAN DIEGO STATE
UNIVERSITY

my.SDSU Town Hall

September 1, 2021



SEPTEMBER 2, 2021

my.sdsu.edu

Agenda

01

President's Welcome
10 minutes

02

my.SDSU Vision & Guiding Principles
15 minutes

03

PeopleSoft Introduction & Project Impacts
15 minutes

04

my.SDSU Project Team Introduction & Project Timeline
10 minutes

05

People-centric Adoption & Change Ambassadors
10 minutes

06

my.SDSU Overview, Key Themes and Q&A
15 minutes



SDSU President
Adela de la Torre

my.SDSU





WE RISE WE DEFY

TRANSCENDING BORDERS,
TRANSFORMING LIVES

SAN DIEGO STATE UNIVERSITY
STRATEGIC PLAN,
2020-2025



SAN DIEGO STATE
UNIVERSITY



SAN DIEGO STATE
UNIVERSITY



FIVE STRATEGIC PRIORITIES emerged through a months-long process of institutional research, benchmarking and community engagement and input.



BECOMING A PREMIER PUBLIC RESEARCH
UNIVERSITY: A NEW KIND OF HSI



RESILIENCE. DESIGNED TO THRIVE



WE ARE SDSU



EQUITY AND INCLUSION IN
EVERYTHING WE DO



STUDENTS AT OUR CORE

WE RISE WE DEFY /13/ 2020-2025

my.SDSU Project Guiding Principles



Transform The Student Experience

Enhance the student experience through more student-centric and transparent processes.



Adopt the CSU Standard

Adopt CSU technology Standards to provide a streamlined, cohesive front and back-end user experience that is aligned with CSU best practices.



Adopt Leading Practices & Business Processes

Adopt leading practices and business processes that improve effectiveness, access and efficiency.



Transform the Use and Availability of Data

Increase access to data in support of decision-making that tells the story of SDSU for current and future students.



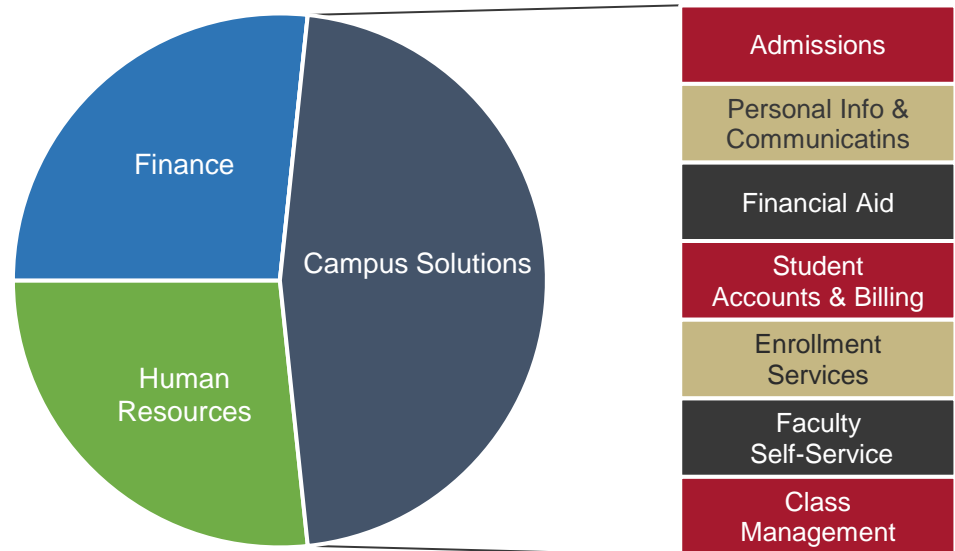
Foster Collaboration & Community Engagement

Facilitate inclusive communication & foster community involvement and trust for a people-centric implementation.

What is PeopleSoft?

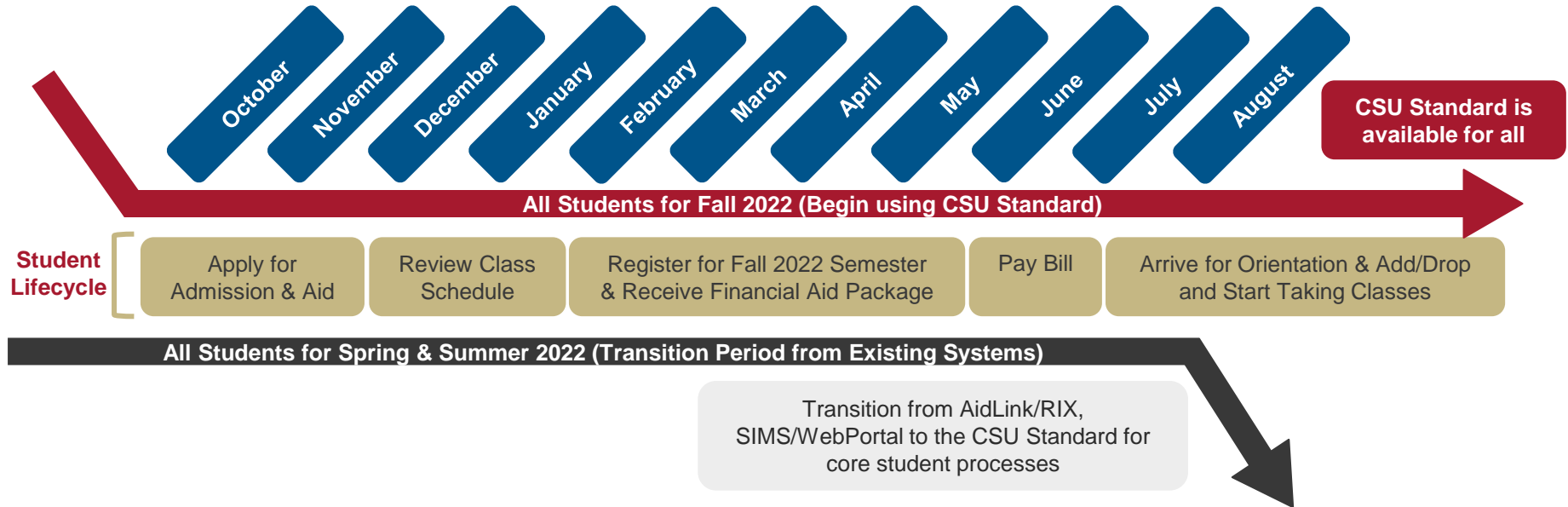
PeopleSoft is a powerful enterprise system that has three core functions – HR, Finance and Campus Solutions (Student).

- The CSU Standard will impact the student experience significantly and also impact the way our staff and faculty conduct business. Some examples of how our processes will change will be:
- Faculty will be able to enter grades, view their class rosters, email students and view a detailed schedule.
- Students will be able to check their financial aid awards, enroll in classes, view their student bill and see their transcript.



How will the my.SDSU Project impact me?

The implementation of the CSU Standard will require a transitional year between now and the Fall 2022 semester. Through this implementation, the SDSU community will be following the student lifecycle.



Adopting Best Practices

A critical part of this implementation is the adoption of both the CSU Standard and leading business practices. Together, they will position us to be more proactive in how we use data and support students.

ADOPTION

We will strengthen and commit to using best practices through the CSU Standard implementation.

We must advocate for best practices that will streamline business processes and the ways we work at SDSU.

BROADENED DATA USE

We will standardize data and information and increase the availability of data across SDSU.

As we adopt the CSU Standard, we will be able to optimize our use of data and create a more comprehensive SDSU story.

COMMUNITY INVOLVEMENT

We will engage the SDSU community – students, faculty and staff – as active collaborators in this implementation.

As a result of a successful implementation, we will transform the student lifecycle experience and ensure all students are able to achieve their greatest potential.

SDSU Project Leadership



Jerry Sheehan
Chief Information
Officer



Tony Chung
AVP Enterprise
Information Systems



Rose Pasenelli
AVP Student Financial
Management



Stefan Hyman
AVP Enrollment
Management



Neal Linson
Chief Data Architect



Cyndie Winrow
Senior Director



Matias Farre
Assistant Controller

Huron's Experience

200+
completed
Oracle projects

550+
Oracle
Certifications

**Certified
Oracle
Partner**
for 15+ years

Huron Leadership



Laura Zimmermann
Executive Sponsor



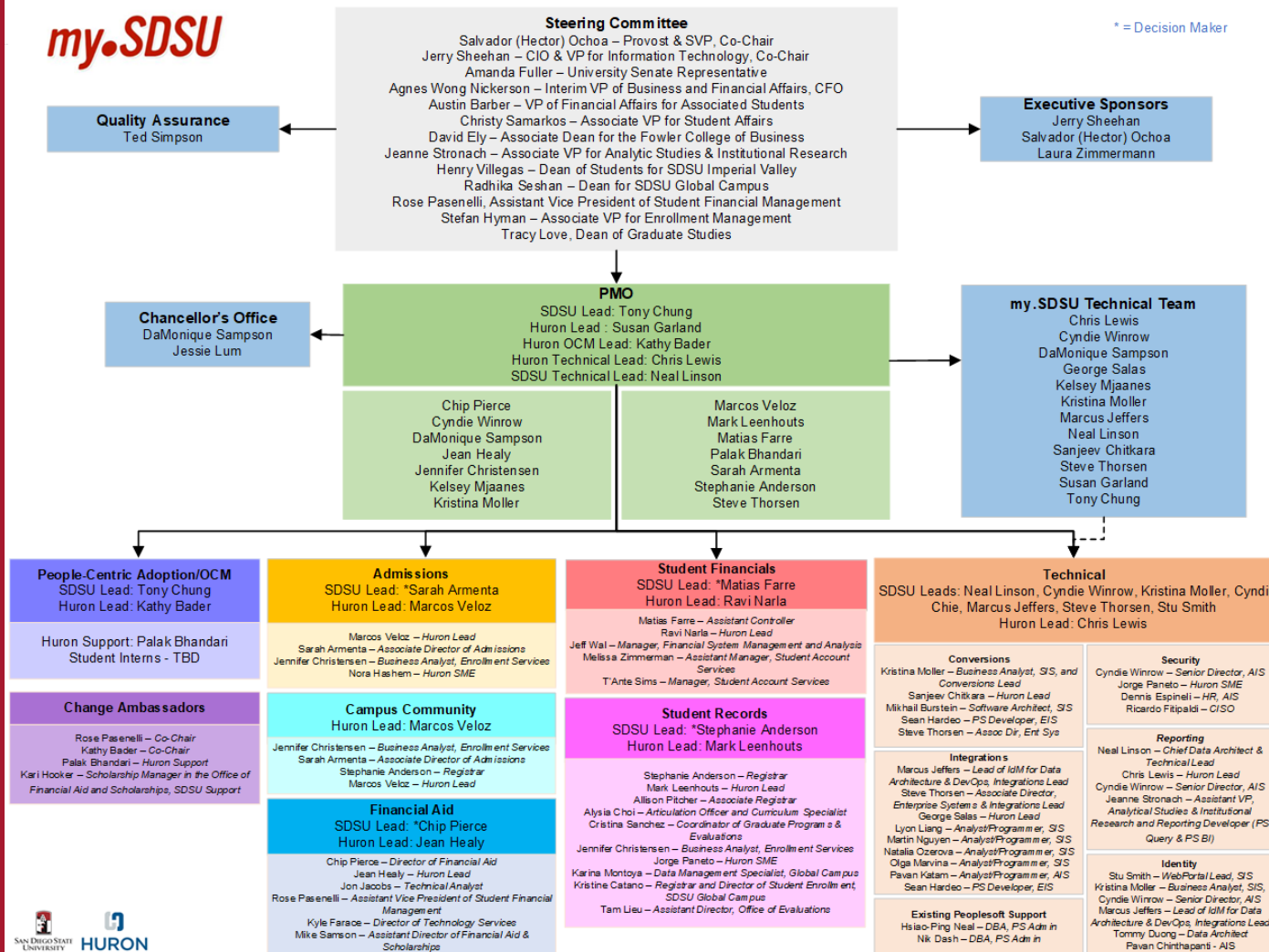
Susan Garland
Project Manager

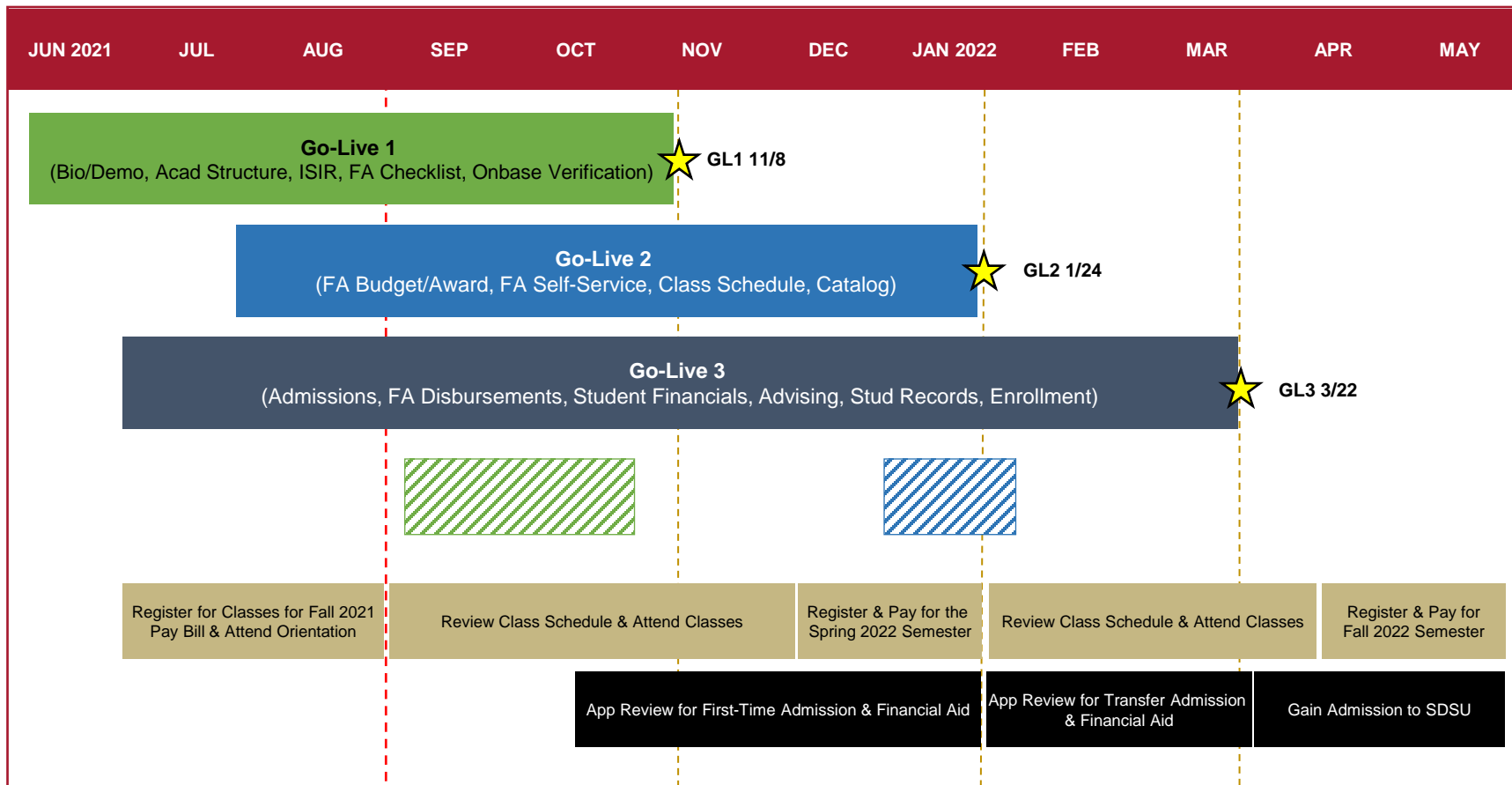


Kathy Bader
People-centric
Adoption Lead



Chris Lewis
Technical Lead





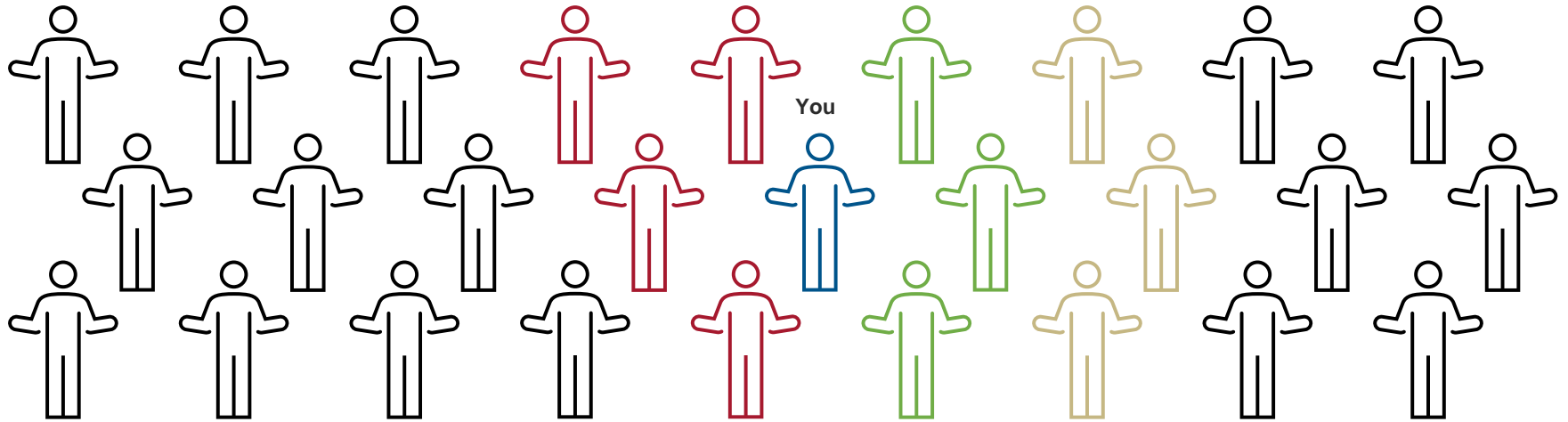
Who is a Change Ambassador?

Executive Sponsors &
Steering Committee

Project Management Office

Change Ambassadors &
Cross Project Team

SDSU Community



What is our charge?

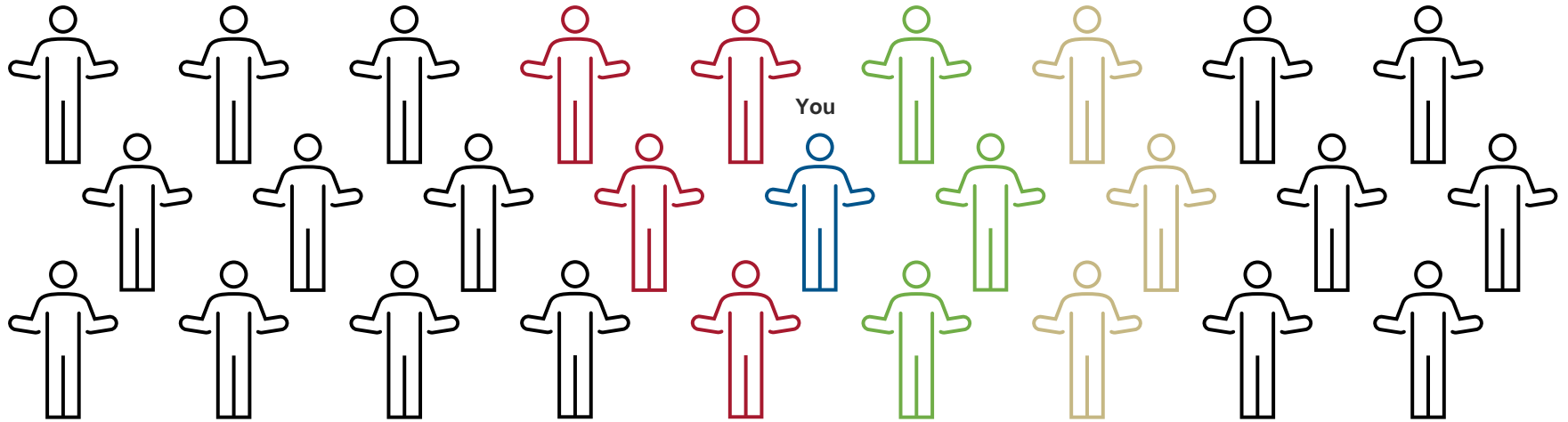
We are ALL Change Ambassadors

Executive Sponsors &
Steering Committee

Project Management Office

Change Ambassadors &
Cross Project Team

SDSU Community



What is our charge?

Areas Represented by Change Ambassadors

Our 40 Change Ambassadors represent a variety of offices, departments and Colleges across campus and will be our community's advocates and sources of information throughout this implementation.







Academic Progress



Academic Records



Financial Account



Financial Aid



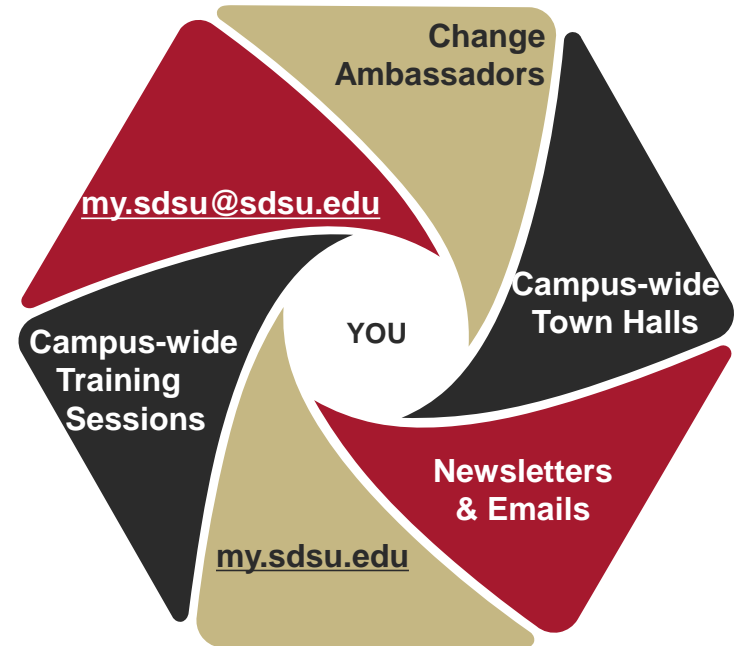
Manage Classes



Key Takeaways

As we wrap up our presentation today, we would like to share our key takeaways prior to moving into the Q&A portion of the Town Hall.

- We are implementing PeopleSoft Campus Solutions (The CSU Standard) in our my.SDSU Project.
- We will have three go-lives to help us strategically follow the student life cycle throughout this implementation (11/21, 1/22, 3/22).
- my.SDSU is replacing AidLink/RIX and SIMS/WebPortal. Between Fall 2021 – Fall 2022 (our initial year), students, faculty and staff will be using both existing and new systems.
- Our goal is to fully transition to PeopleSoft for the Fall 2022 semester and ensure everyone – students, faculty and staff – has the appropriate training for their duties.



Q&A

Project Website: my.sdsu.edu

Project Email: my.sdsu@sdsu.edu

THANK YOU



SAN DIEGO STATE
UNIVERSITY



SEPTEMBER 2, 2021

my.sdsu.edu

Appendix

